

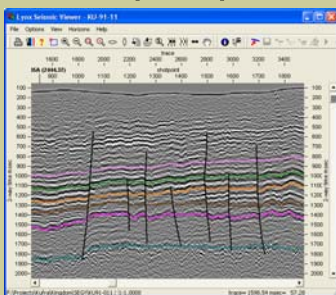


# Lynx Seismap

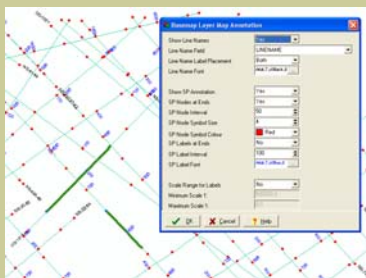
A seismic data viewing extension for ArcMap®

Lynx Information Systems Ltd is an official Value Added Reseller and Business Partner of both ESRI UK and ESRI US. Lynx develops its own software for use with the ESRI suite of GIS products.

## Seismap examples :



Display horizons & faults



Customise the seismic basemap

For further info contact us at :

**Lynx Information Systems Ltd**

93-99 Upper Richmond Road,  
Putney, London,  
SW15 2TG  
United Kingdom

Phone: +44 (0)208 780 2634

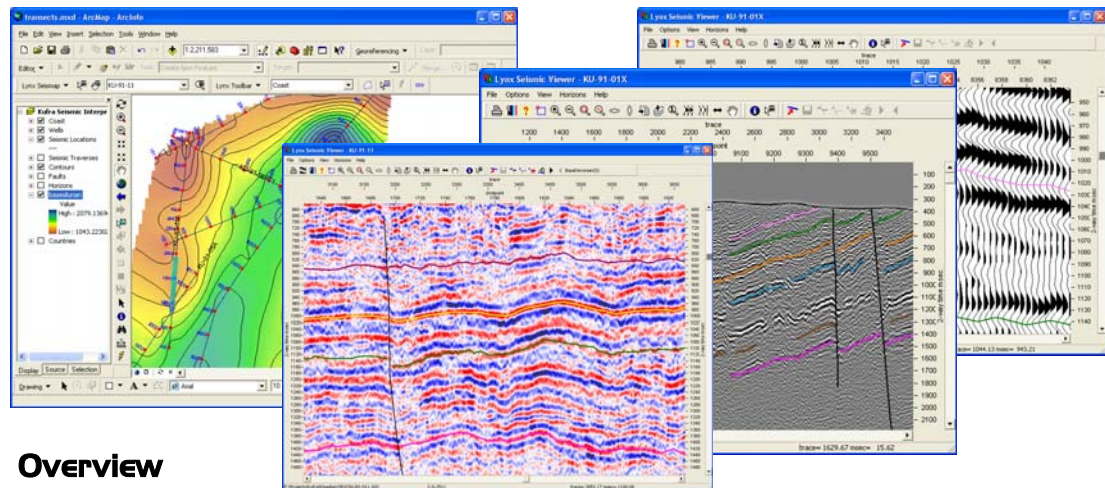
Fax: +44 (0)208 780 0931

Email: lynx@lynxinfo.co.uk

Web : www.lynxinfo.co.uk

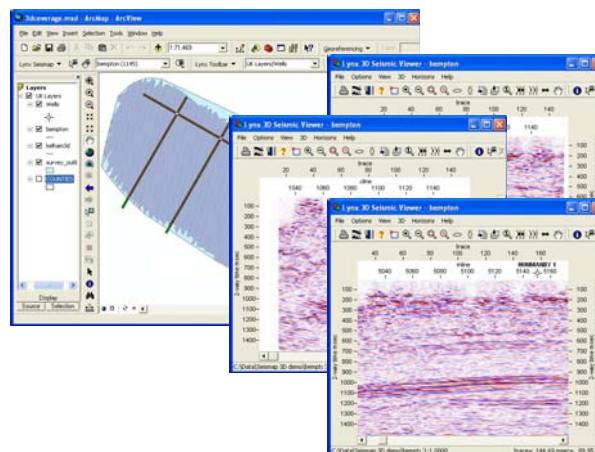
**Lynx Information Systems Inc**

16420 Park Ten Place, Suite 150  
Houston, Texas 77084,  
United States of America  
Phone: +1 281 599 7226  
Fax: +1 281 599 7790  
Email: lynx@lynx-info.com  
Web : www.lynx-info.com



## Overview

**Lynx Seismap** is a seismic data file viewer extension that tightly integrates seismic trace and interpretation data with ESRI's ArcMap® product. 2D and 3D seismic profiles can be launched by selecting a line within ArcMap. Each seismic profile is displayed in a separate window, and the current shot-point range is highlighted on the basemap layer. Multiple seismic profiles can be viewed at a time. Shapefiles (PolylineZ) and surfaces (TINs and ESRI raster grids) can also be overlaid on the seismic profile as horizons and faults. The seismic viewer allows extensive control over the display scales, zooming, with many different display options, and plotting to full scale Windows compatible plotters.



## Benefits

- Tight integration of seismic trace data and interpretation data with GIS project layers
- Leverage your investment in GIS technology and existing data packages
- Support of industry standard data formats such as : SEG-Y, UKOOA SEG-P1, Landmark and SMT Kingdom
- No workstation loading required— simply “plug-in & play”

## Supported Platforms

- ESRI ArcMap ® versions 9.0, 9.1 and 9.2
- Windows 2000/XP/2003 Server

## Key Features

- Launch and pan seismic data viewer in context with ArcMap®
- Display 2D and 3D seismic profiles
- Colour, greyscale and VA/wiggle seismic display
- Quick & easy labelling of seismic basemap
- Display seismic line & well intersections
- Overlay polylines and surfaces as horizons and fault in seismic viewer window
- Import UKOOA (SEG-P1)/CSV ASCII file to shapefile with measures (PolylineM)
- Export seismic basemap layer to UKOOA/CSV file
- Integrate 2d seismic interpretation data from SMT Kingdom with ArcMap®
- Horizon polyline Z-value display by colour ramp
- Import/Export Landmark ZMAP grid files

