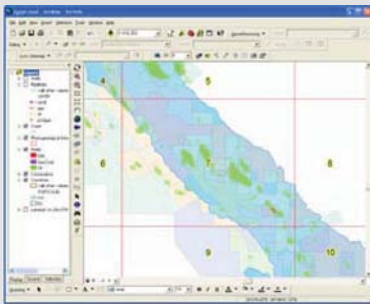


Lynx RasterLink for ArcGIS

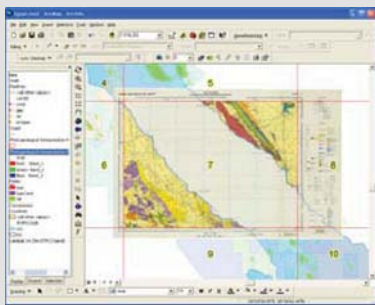
Smart image management

Lynx software for ESRI ArcGIS Desktop.

'Point and Click' access to images



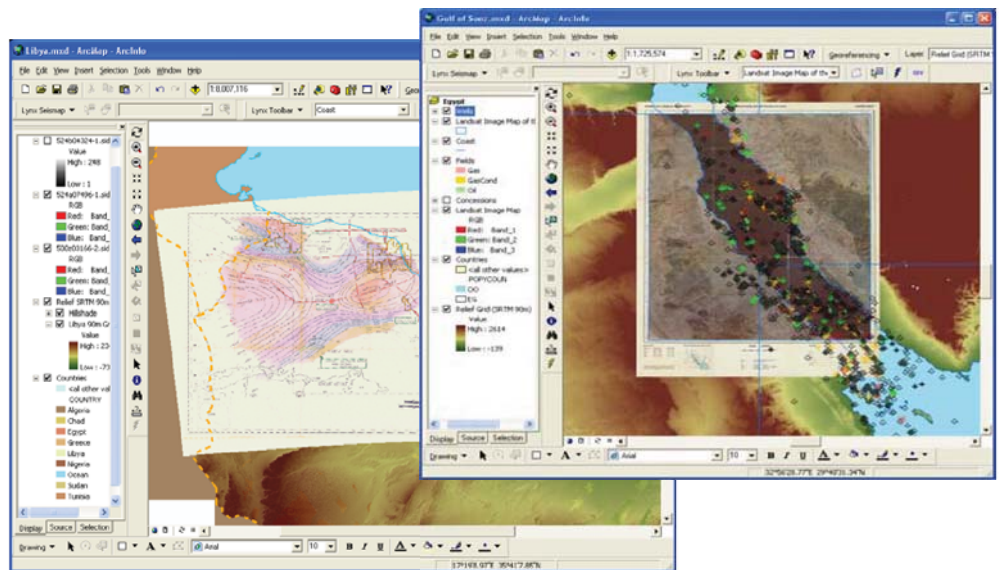
Add only the images you require



Contact us for licensing and pricing information

Lynx Information System Ltd
93-99 Upper Richmond Road
Putney, London
SW15 2TG
United Kingdom
Phone: +44 (0) 20 8780 2634
Email: lynx@lynxinfo.co.uk
Web: www.lynxinfo.co.uk

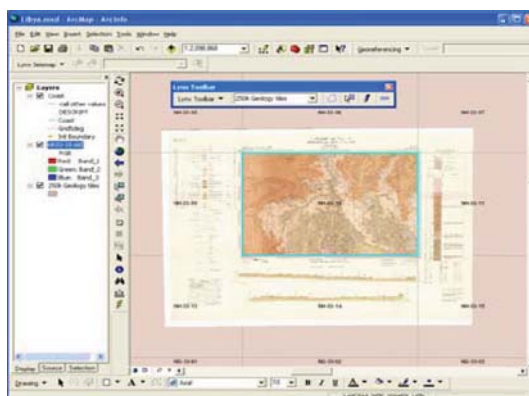
Lynx Information Systems Inc
16420 Park Ten Place
Suite 150
Houston, Texas 77084
United States of America
Phone: 281 599 7226
Email: lynx@lynx-info.com
Web: www.lynx-info.com



The **Lynx RasterLink** extension for ESRI ArcGIS Desktop provides quick access to georectified images in a raster catalogue or hyperlinked feature layer. It enhances ArcMap's built-in support for georeferencing, handling all ESRI-supported formats. When an ArcMap project contains a large number of georectified images, it may quickly become unwieldy and slow to respond to scrolling and panning. Using RasterLink avoids the need to create map documents containing large numbers of georectified images in the table of contents, since images can be quickly accessed by clicking on a polygon or centroid on a map.

Key Features

- Georectified raster image viewer
- User-selectable layer
- Renders georeferenced raster images into ArcMap data frame
- Raster image added to table of contents
- Works with map polygon outlines or map centroids
- No more slowing up of map display and scrolling
- Works with MrSID, TIFF, JPEG and ERDAS



Benefits

- 'Point and Click' access to raster images
- No need to drill through complex table structures
- Only add the raster images you require
- Easy to use data management tool

Supported Platforms

- Requires ESRI ArcGIS Desktop version 9.x

