

# Lynx ClickRelate for ArcGIS E and P data retrieval

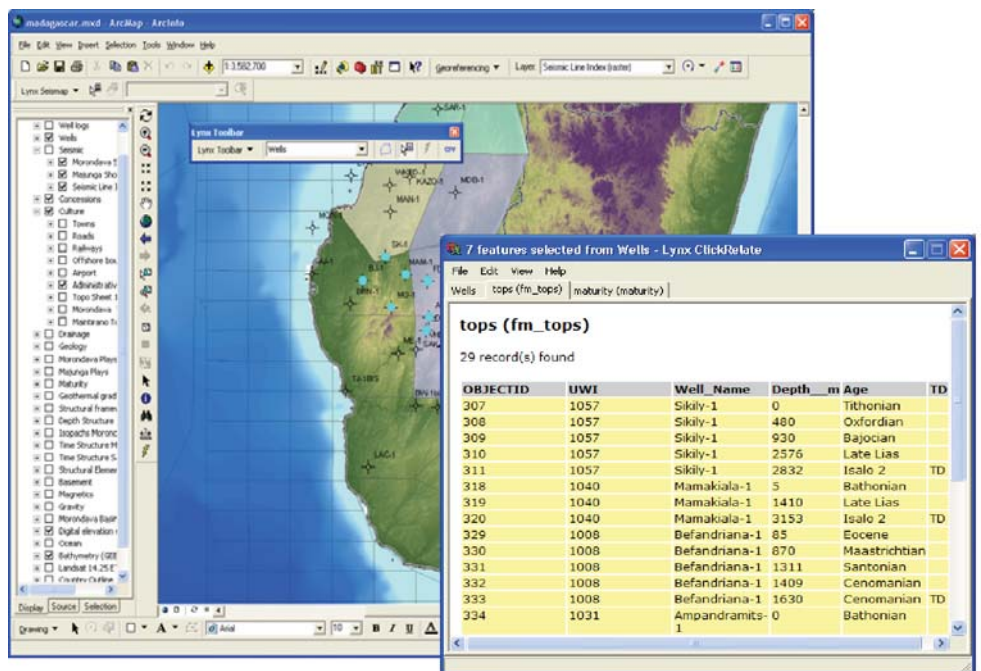
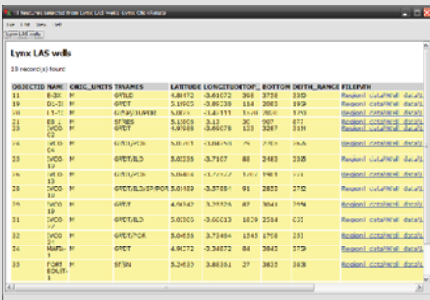
Lynx software for ESRI  
ArcGIS Desktop.

Lynx ClickRelate gives you -

- Direct hyperlinks to documents



- User-friendly browser window



The **Lynx ClickRelate** extension for ESRI ArcGIS Desktop provides a method of viewing attributes for selected features within ArcMap, displaying the attribute field values for selected and related records in a user-friendly browser window. Matching records from related tables (one-to-one or many-to-one joins) can be viewed by clicking the tabs at the top of the browser window, providing easy and intuitive access to all the relationships defined for the feature layer. Hyperlinks can also be used to link to local (LAN) or internet-based documents. The browser display provides both a list-based and tabular view of selected records. The displayed results can be printed, copied to the clipboard or saved as HTML.

Contact us for licensing and pricing information

## Lynx Information System Ltd

93-99 Upper Richmond Road  
Putney, London  
SW15 2TG  
United Kingdom  
Phone: +44 (0) 20 8780 2634  
Email: lynx@lynxinfo.co.uk  
Web: www.lynxinfo.co.uk

## Lynx Information Systems Inc

16420 Park Ten Place  
Suite 150  
Houston, Texas 77084  
United States of America  
Phone: 281 599 7226  
Email: lynx@lynx-info.com  
Web: www.lynx-info.com

## Key Features

- Attribute and related table contents viewer
- Switch between list and tabular view mode
- User-selectable layer
- No configuration necessary - works with any feature and any table relationships
- XSL templates for display can be customised
- Displayed results can be copied to another application
- Straightforward printing of selected results

## Benefits

- Point-and-Click access to the information held with the attribute and related tables
- No need to 'drill' through complex table structures
- Direct hyperlinks to related documents
- Easy-to-use data management tool

## Supported Platforms

- Requires ESRI ArcGIS Desktop version 9.x

