

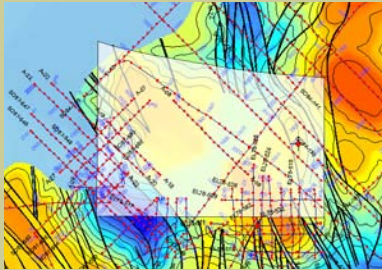


Libya Medina Bank GIS

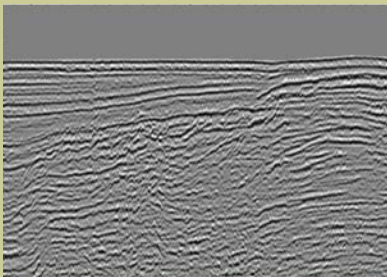
EPSA-IV (IV) Bid Round Area 003

Lynx Information Systems specialises in the provision of seismic data services, geophysical, and GIS services to the petroleum exploration industry. We offer a full range of services, regional GIS data packages and software solutions.

Data package samples :



Two-way time interpreted grid
(Top Miocene Unconformity)



Seismic profile through Area 003.

For further info contact us at :

Lynx Information Systems Ltd

93-99 Upper Richmond Road,
Putney, London,
SW15 2TG
United Kingdom

Phone: +44 (0)208 780 2634

Fax: +44 (0)208 780 0931

Email: lynx@lynxinfo.co.uk

Web : www.lynxinfo.co.uk

Lynx Information Systems Inc

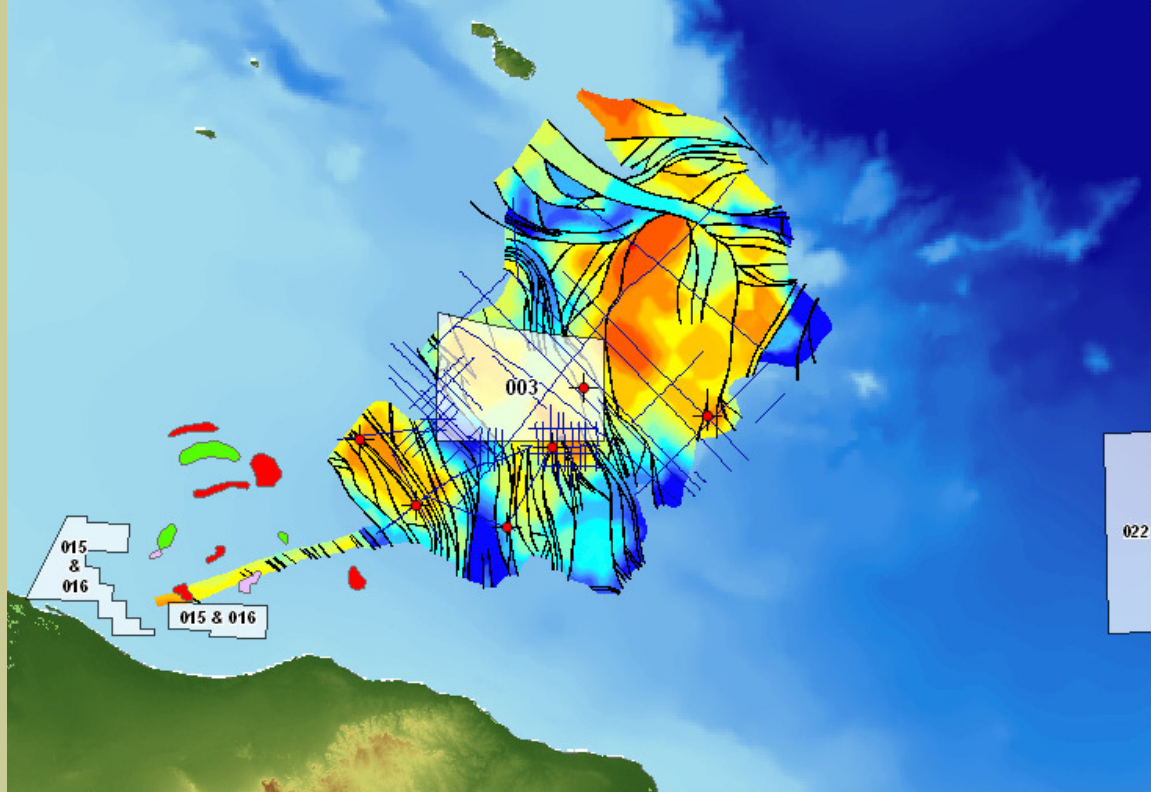
16420 Park Ten Place, Suite 150
Houston, Texas 77084,
United States of America

Phone: +1 281 599 7226

Fax: +1 281 599 7790

Email: lynx@lynx-info.com

Web : www.lynx-info.com

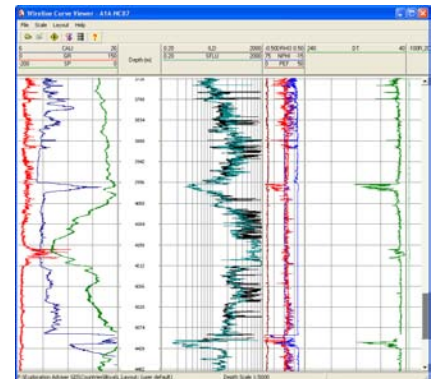


Overview

The Medina Bank GIS module bounds the western flank of the Sirte Basin and encompasses the EPSA-IV (IV) bid round area 003 which is located in the Mediterranean Sea between the Island of Malta and the Libyan coast. The Bouri field is located 110 km south-west of Area 003 and produces oil & gas from Lower Eocene carbonates. This project includes over 3000 km of 2d seismic data and six digital wells (totalling just under 1 million curve feet) together with several interpreted structure and isopach maps which are also available in ZMAP+ format for immediate loading to the workstation.

Main Features

- Digital seismic
- Digital wells
- Wells database
- Satellite imagery
- Elevation (SRTM)
- Bathymetry
- Gravity
- Structure & isopach grids
- Fields
- Concessions
- Fields database
- Production information



Data Packaging

- Lynx GIS digital exploration data packages are organised into ArcGIS 9.x geodatabases, with each having its own map document (MXD).
- This GIS module comprises of pre-built map ready layers called 'spatial layers' (lyr) which can be incorporated into your existing GIS project or added to a new map document (MXD).

ArcMap is a registered trademark of ESRI Inc

